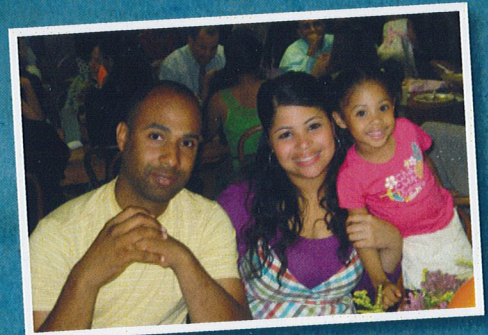


# About Camp Timberledge

for more than 50 years  
faith, friends, and fun in the great outdoors

Camp Timberledge is nestled on 280-acres of woodland and lakes in the Pocono Mountains of northeastern Pennsylvania. The camp provides an intimate setting, close to nature, for small to mid-sized Christian retreats and meetings (60 guest capacity, May – October; 40 guest capacity, November – April).

A ministry of the New York Conference of the Free Methodist Church, Camp Timberledge is licensed by the State of Pennsylvania. It is an active member of the Christian Camp and Conference Association.



Camp Timberledge does not discriminate on the basis of color, ethnic/national origin, disability, race or gender.

## Relaxation, Fellowship, and Recreation:

Spend time in meditation, enjoy a good book, conversation, the warmth of a wood-burning fire and relaxing table games. Witness forest wildlife, trees, and flowers, experience lake fishing, boating, canoeing, kayaking, swimming, ice skating and explore portions of the two miles of well-marked hiking, cross-country skiing, and snowshoeing trails (request brochure). There is also basketball, softball, volleyball, and ping pong.

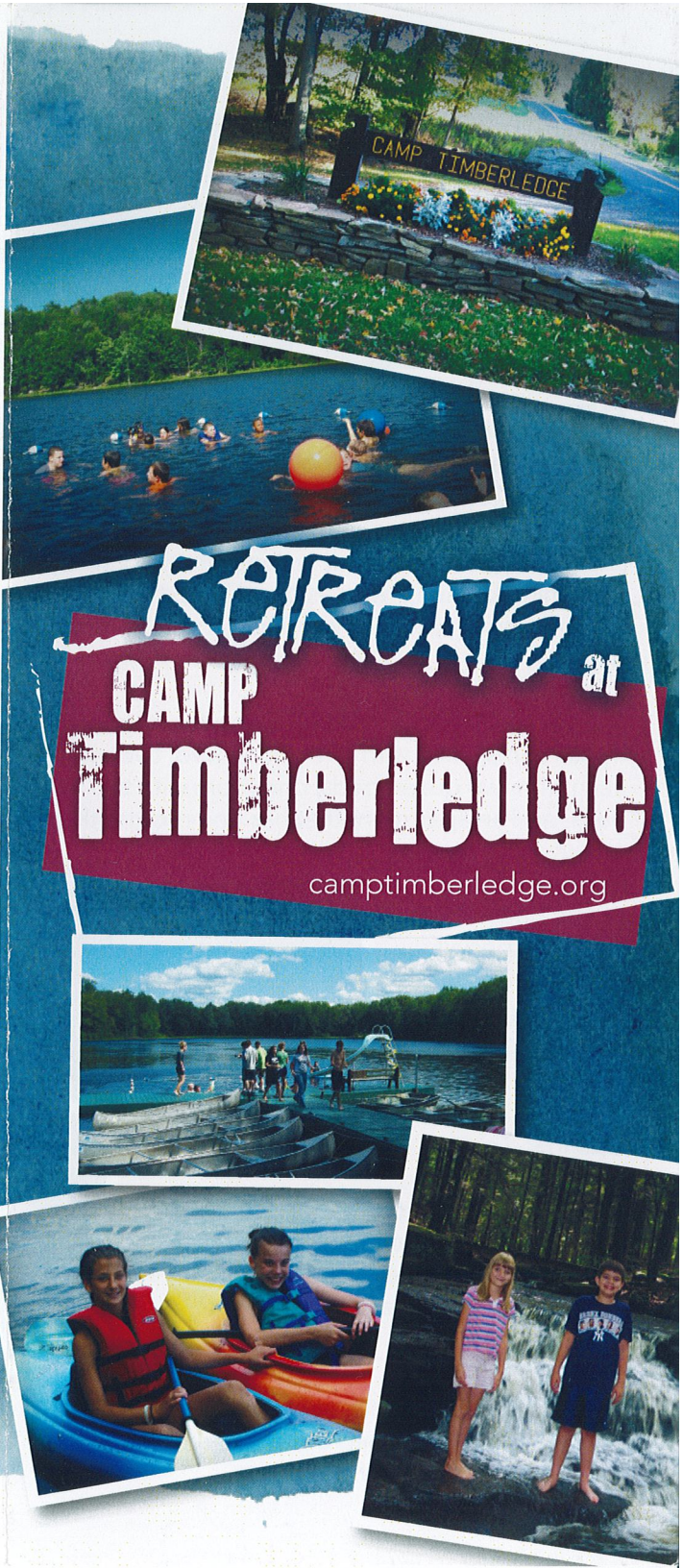


The 20 acre Timberledge Lake is well-stocked with pickerel, bass, catfish and bluegills, and is great for fishing. Check <http://www.fish.state.pa.us/faqlice.htm#1> for license information.

The Delaware River, part of the National Park System, is a less than 6 miles away. Outfitters offer canoe, kayak and raft rentals for groups interested in a day of water adventure.



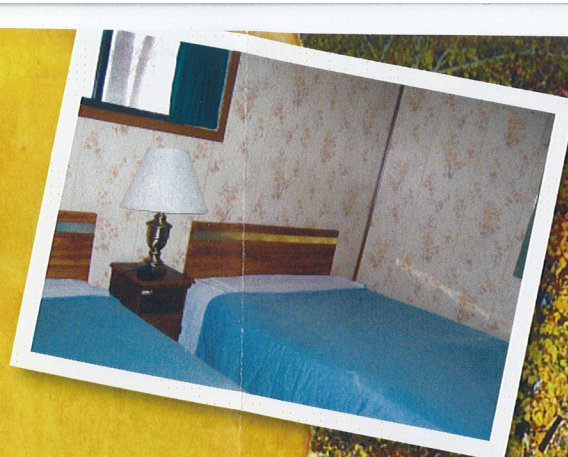
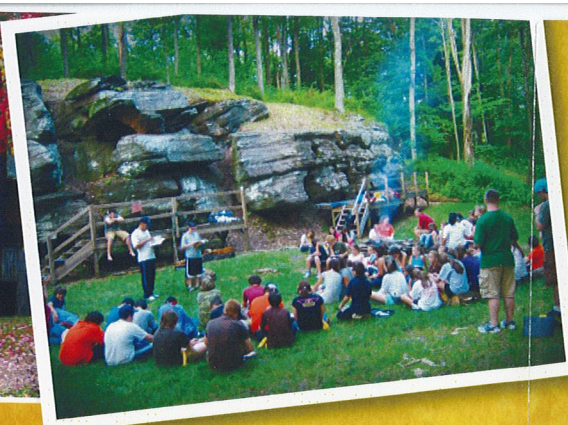
P.O. Box 152  
Beach Lake, PA 18405



# RETREATS at CAMP Timberledge

[camptimberledge.org](http://camptimberledge.org)

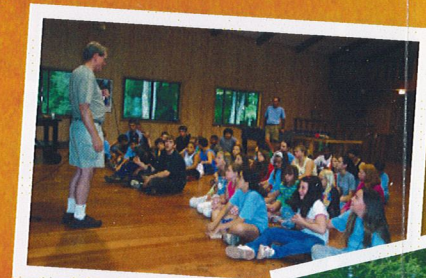




## RETREAT FACILITIES

**Camp Center:** The year-round retreat center includes a 2000 square-foot all-purpose area and balcony, with meeting and worship facilities for 100 and a dining area for 48. It includes three lounges, a warming kitchen - not designed for extensive cooking - five restrooms with showers and a large deck.

The Camp Center provides lodging for 22 guests - three rooms, each with one queen bed; two rooms, each with two queen beds; one room with two twin beds; and an apartment that has one room with one queen and a second room with two queen beds. Youth groups especially enjoy the overflow sleeping space in the all purpose area.



**Cabins:** Three new cabins (two sleep 14 and one 16) are located near the restroom building and dining hall. All are heated and available spring, summer, and fall and with special arrangements, during winter.

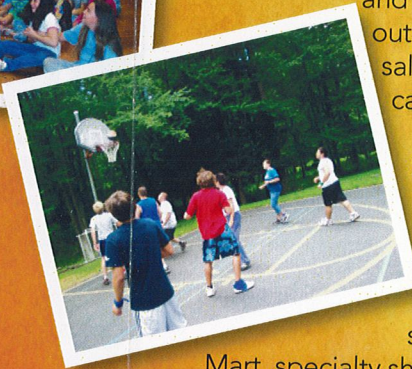
**Tents:** Four 16-foot square tents mounted on wooden platforms, sleep 8. Tents are located near the cabins and restroom building.

**Dining Hall:** Includes a commercial kitchen, utensils, and a dining area that seats 75.

**Restroom Building:** Men's and women's toilets and showers are available for use by those in tents and cabins. The women's restroom was extensively remodeled and winterized in 2008.

**Lean-to:** This three-sided cabin sleeps eight. It is located in the forest near the high bridge waterfall, about 1/2 mile from the Camp Center. It does not have restroom facilities.

**Food Service:** Retreat groups prepare their own meals unless alternative arrangements are made. The Dining Hall is available May 15 - October 15. Smaller groups may use the Camp Center kitchen, a warming kitchen which is not designed for extensive cooking. Many groups choose to bring beverages, and some prepared food, use take-out (pizza, sandwiches, meat and salad trays, etc.), or hire a local caterer. (Request a list of vendors.)



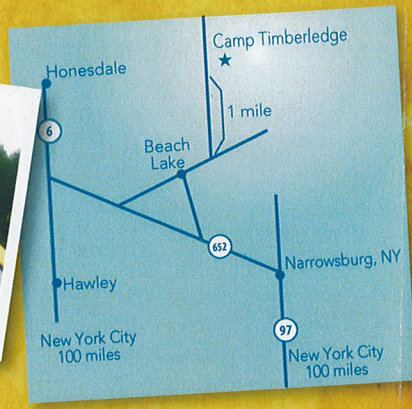
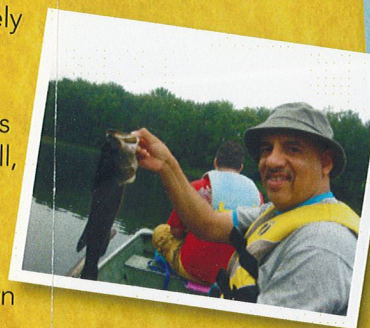
Shopping is convenient: Camp Timberledge is two miles from a country store, restaurants, a family fun park, driving range and laundromat. It is within six miles of supermarkets, Wal-Mart, specialty shops and a movie theater. Historic Honesdale and Hawley, each with its own charm, restaurants, boutiques, gift, and antique shops and golf courses, are within 15 minutes.

## RATES

**Camp Center**  
\$20 per person (includes linens)  
\$10 per child 5-11  
FREE children under 5

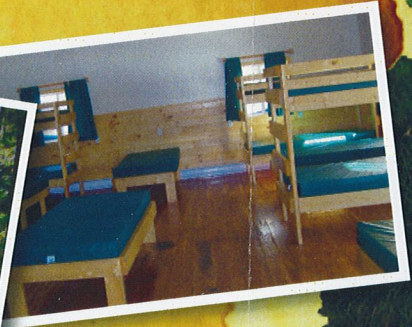
**Cabins, Tents, and Lean-to**  
\$15 per person (no linens)  
\$8 per child 5-11  
FREE children under 5

**Directions:** Check [www.camptimberledge.org](http://www.camptimberledge.org)



## TO MAKE RESERVATIONS:

Contact Dr. Joseph Barnes for application, rates and availability at:  
[jbarnes@camptimberledge.org](mailto:jbarnes@camptimberledge.org),  
717-766-4134 or  
570-729-8388 (July and August)



CAMP  
**Timberledge**

Beach Lake, Pennsylvania